

HINGHAM SHIPYARD MARINA – 24 SHIPYARD DR.

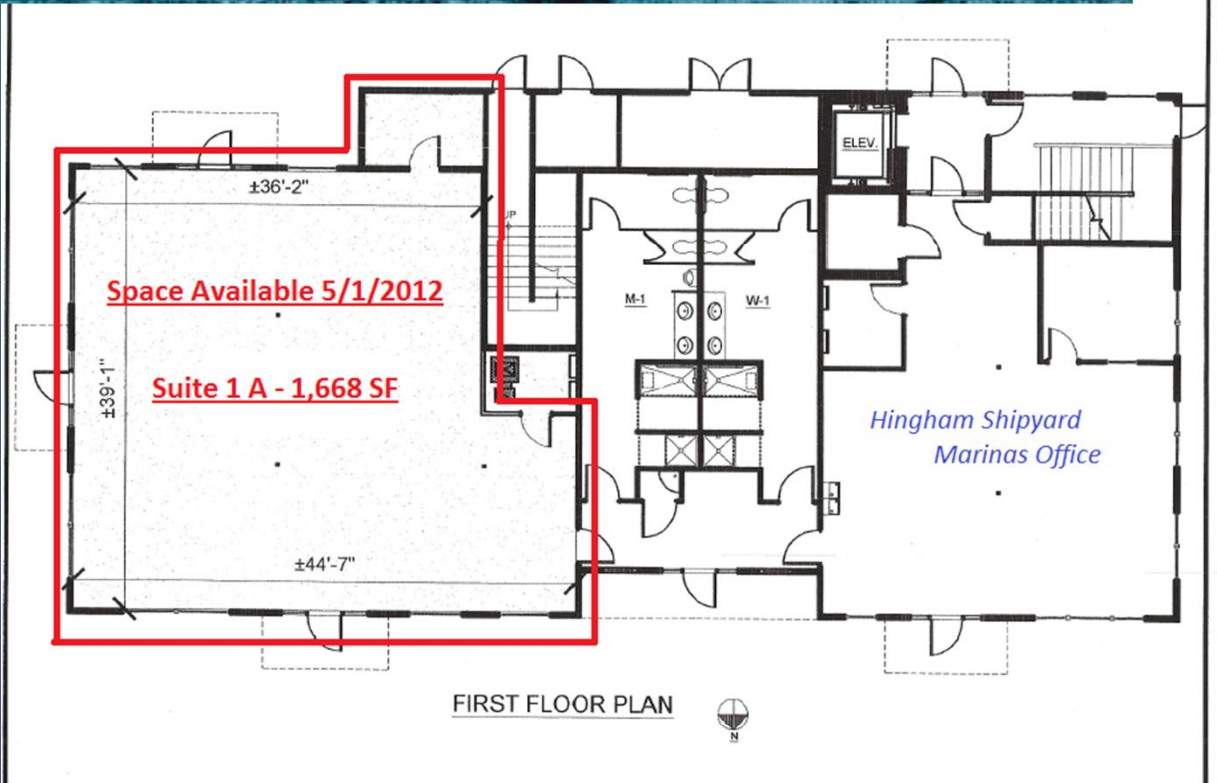


24 SHIPYARD DRIVE

Multi tenanted Class A office / retail space with outstanding full length window lines, offering spectacular views of the Weymouth Back River. The 1,684 SF Space offers ample parking and enjoys multiple dining and shopping options in the immediate area. Additionally, the property is adjacent to the MBTA commuter ferry which provides convenient access to Downtown Boston.

For Inquires regarding leasing please call 781.749.2222

For Leasing Inquiries Please Call 781.749.2222



HINGHAM SHIPYARD
HINGHAM, MA.

